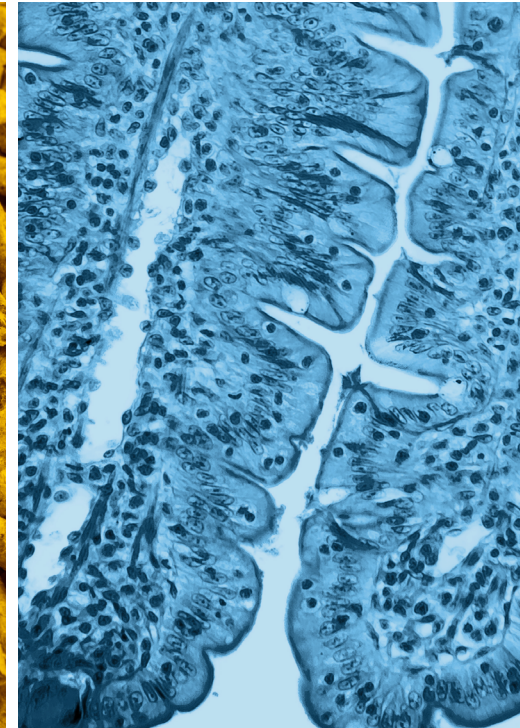
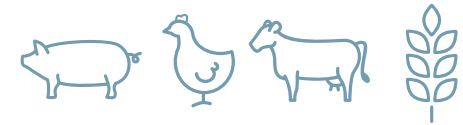




SCHOTHORST FEED RESEARCH



## > FEEDS & NUTRITION COURSE 2024

MIX & MATCH YOUR PROGRAMME AND PUT THE SFR APPROACH INTO ACTION!

*Knowhow to feed*



## Introduction

Over the years, our annual Feeds & Nutrition course has become one of the main meeting places for junior and senior professionals working in the international animal feed business. This year, that we celebrate the 90th anniversary of SFR, it is an honour to organize the 13th edition of this course.

In this flexible programme, led by SFR's experienced researchers and consultants, you have the opportunity to learn about the latest developments in applied ruminant, poultry and swine nutrition. This year the focus will specifically be on how to contribute to a sustainable livestock production. We will further dive into actual topics like e.g. fibre evaluation, the impact of particle size, how to reduce the use of antibiotics, benefits of using different energy systems and many more.

Different modules have been developed, all with specific themes. In this way you can tailor the program to your individual needs. Next to that, the Feeds & Nutrition course offers great opportunities to meet researchers, nutritionists, product managers and sales managers from animal nutrition, feed ingredients suppliers and animal genetics companies across the globe. Both during the day as well as in the evening programs.

I am looking forward to meeting you on June 3-7, 2024!

Best regards,  
**Jan Kamphof**  
CEO



THE TRAINERS



## MODULE 1 AND 2 FEEDSTUFFS

Formulating animal feed is a complex task related to global developments in the raw material market. It impacts the decision-making process on an ongoing basis. Various feedstuffs characteristics are ignored in linear programming. Therefore, feedstuff purchase, quality and use depend on the person's know-how and skills in formulating the diets.

These modules offers you an in-depth overview of evaluation factors for correct decision-making. They give you guidance about available feedstuffs, nutritional characteristics, impact on cost pricing, nutritional quality and animal feed safety.

### Learn about

- > The nutritional value of feedstuffs
- > The reasons for variation in nutritional quality
- > Usability of feedstuffs in feed formulations
- > Implementation of feedstuffs know-how in your daily routine

### Who can benefit?

- > Nutritionist
- > Purchase Manager
- > Quality Manager
- > Veterinarian

### Did you know...

- > that 100 different feedstuffs will be discussed in two days?
- > that particle size of feedstuffs is significantly reduced during pelleting?



THE TRAINERS



## MODULE 3 NUTRIENT EVALUATION MONOGASTRICS

Energy and amino acids are the two most expensive components in a swine or poultry diet. A good understanding of the nutritional needs of the animals is required to produce cost-efficient diets. Therefore, knowledge about nutrient evaluation systems is key.

This module offers an in-depth overview of how to interpret and apply the different energy systems in swine and poultry nutrition. Also, the added value of diet optimization based on digestible amino acids (and profile) are discussed. Next, the functional results of fibre (by-products) on performance, and differences between poultry and swine for the use of fibre are considered. Finally, the different phosphorus systems and its effect on dietary calcium are presented.

### Learn about

- > Fibre evaluation
- > Energy evaluation
- > Protein and amino acid evaluation
- > Ca and P evaluation

### Who can benefit?

- > Nutritionist
- > Veterinarian
- > Product manager
- > Sales manager

### Did you know...

- > that diet optimisation based on net energy and digestible amino acids will reduce feed costs?
- > that physiological stages of the animal affect the utilisation of fibre?
- > that some alternative protein sources can negatively impact intestinal health?
- > that high Ca levels have a negative impact on P availability and growth?



## MODULE 4 RECENT DEVELOPMENTS IN ANIMAL NUTRITION

New in the Feeds & Nutrition course is this module on recent developments in animal nutrition. Every year we focus on the most interesting topics of this moment. This year we will update you about sustainability of animal products and the role of buffering minerals. Sustainable production of animal products (milk, eggs and meat) is rapidly gaining attention from consumers and supermarkets. Targets defined by governments are turned into key performance parameters for livestock and feed production.

Buffering minerals take a key position in animal nutrition. There is a direct requirement for animal health, welfare and production. Minerals are used as building blocks as well as in systems to regulate the metabolic and physiological conditions of the animals.

### Learn about

- > The definition of sustainability in feed production
- > Possibilities to improve sustainability of compound feed and livestock production
- > Effect of buffering minerals on metabolic and physiological condition of cows, pigs and poultry and its evaluation in ration optimisation
- > Indirect effects of buffering minerals on amino acid digestion in monogastrics

### Who can benefit?

- > Nutritionist
- > Product manager
- > Sales Manager
- > Previous F&N participants

### Did you know...

- > that the EU countries are obliged to reduce 55%-CO2 by 2030?
- > feed is the main contributor of carbon footprint in animal protein production?
- > there are two different buffer systems in the animal?
- > minerals are essential for the rumen and metabolic buffering in the dairy cow?



## MODULE 5, 6 AND 7 APPLIED SWINE NUTRITION

Applied Swine Nutrition is about getting the best technical performance at the lowest cost price while maintaining animal health and welfare. We need to keep consumer demands in mind: best meat quality at the lowest price, produced in a sustainable and climate-friendly way. We offer you tools and insights on how to achieve the optimum balance.

Applied Swine Nutrition consists of three separate modules, each focussing on a different aspect:

- > Module 4: Improve piglet vitality to improve sow lifetime performance.
- > Module 5: Gastrointestinal health, the key to optimal performance.
- > Module 6: Optimal performance of growing-finishing pigs; focus on growth or FCR?

Every module finishes with an interactive feed formulation to illustrate the effects of the discussed topics on feed composition and feed price.

These three modules offer an overview and in-depth understanding of swine nutrition. You can choose to follow a single module. However, if you are looking for a comprehensive overview, it is recommended to subscribe to all three modules.

### Learn about

- > The relationship between digestion, nutritional requirements and swine health
- > Combining different feeding strategies focussing on efficiency, health and sustainability
- > Applying these strategies into daily feed formulation

#### THE TRAINERS



### Did you know...

- > that gilt development will set the lifetime performance of the sow?
- > that the suckling period is a window of opportunity to prepare the piglet for weaning?
- > that digestible P level affects bone strength and daily weight gain?





## MODULE 8, 9 AND 10 APPLIED POULTRY NUTRITION

Applied Poultry Nutrition is about getting the best technical performance at the lowest cost price while maintaining animal health and welfare. We need to keep consumer demands in mind: best meat and egg quality at the lowest price, produced in a sustainable and climate-friendly way. SFR offers you tools and insights on how to achieve the optimum balance.

Applied poultry nutrition contains three different modules, each with its own focus:

- > Module 8 will focus on physiology, protein reduction, new broiler concepts, and minerals in relation to the electrolyte balance.
- > Module 9 will focus on (intestinal) health, poultry diseases, and meat quality issues.
- > Module 10 will focus on feed processing, laying hen nutrition, eggshell formation, broiler breeder nutrition, and challenges in layer management.

Every module finishes with an interactive feed formulation to illustrate the effects of the discussed topics on feed composition and feed price.

These three modules offer an overview and in-depth understanding of poultry nutrition. You can choose to follow a single module. However, if you are looking for a comprehensive overview, it is recommended to subscribe to all the poultry modules.

### Learn about

- > The relationship between digestion, nutritional requirements and poultry health
- > Dealing with dilemmas such as efficiency, health and sustainability
- > Applying different strategies into daily feed formulation

### Did you know...

- > that particle size can indirectly affect intestinal health?
- > that slow-growing broilers require a specific nutritional approach?
- > that replacing soybean meal affects the electrolyte balance and litter quality?



THE TRAINERS



## MODULE 11 ADVANCED DAIRY NUTRITION

This module offers an overview and in-depth understanding of rumen fermentation and intestinal digestion explained by a nutrient oriented feed evaluation model (the E-dairy model). The information can be used to improve milk yield and milk composition.

Are you interested in a comprehensive overview? It is recommended to subscribe also for module #12 to learn more about young stock nutrition, forage quality and how to reduce metabolic diseases, N, P and methane emissions. On top of this, module #13 offers you the opportunity to implement a practical ration optimisation.

### Learn about

- > Fermentation, digestion and metabolism in ruminants using the E-dairy model
- > The impact of nutrition on milk production and composition
- > Bypass protein, bypass fat and technologically treated grains using the E-dairy model

### Who can benefit?

- > Nutritionist
- > Veterinarian
- > Product manager
- > Sales manager

### Did you know...

- > that the E-dairy model is based on the nutrient approach of dairy cow nutrition?
- > that milk fat production is more dependent on indirect effects of nutrition than on the provision of lipogenic nutrients?
- > that many bypass protein sources can improve dairy cows' protein and amino acid nutrition?



THE TRAINERS





## MODULE 12 APPLIED DAIRY NUTRITION

Applied Dairy Nutrition is about achieving the best technical performance while maintaining optimal animal health & fertility and reducing the environmental impact. Optimising milk production, animal welfare and longevity is possible if feed and feeding management during lactation and young stock rearing is harmonised during the critical periods.

This module covers **two days** and offers an overview and in-depth understanding of dairy nutrition. You can choose to follow a single module. However, if you are looking for a comprehensive overview, it is recommended to subscribe to all three modules (#11, #12 & #13).

### Learn about

- > Feeding strategies during the transition period to reduce the incidence of metabolic diseases and improve fertility and health
- > Preventing subacute rumen- and hindgut acidosis
- > Recent insights to improve young stock rearing
- > Reducing the environmental impact of dairy cow husbandry
- > The factors influencing forage quality

### Who can benefit?

- > Nutritionist
- > Veterinarian
- > Product manager
- > Sales manager

### Did you know...

- > that feed intake and growth in the first weeks of life sets lifetime performance of cows?
- > that dry cow nutrition and management can affect acidosis in the alimentary tract later in lactation?
- > that storage time decreases bypass starch in corn silage?
- > that feeding strategies can help reduce enteric methane emissions up to 40%?



THE TRAINERS



## MODULE 13 FEEDING MANAGEMENT AND RATION FORMULATION

The formulation of practical rations aims to provide nutrients for high yielding dairy cows and obtain optimal health, fertility and longevity. Understanding the signals from the cow in interaction with herd management, housing and ration composition is essential to improve management and ration formulation. Many parameters have an impact on feed intake. Diet formulation requires a step-by-step approach to consider the forage quality and availability, choose compound feeds or ingredients and calculate the nutrients supply compared to the recommendations. This module will provide you with a sound basis for practical ration formulations.

### Learn about

- > Understanding importance of management and housing via CowSignals®
- > Feed intake regulation and the impact of ration composition, animal data and feeding management on dry matter intake
- > Practical rations for high yielding dairy cows in all stages of lactation
- > Formulating, using the professional software package FeedExpert by using the parameters from the E-dairy model

### Who can benefit?

- > Nutritionist
- > Veterinarian
- > Product manager
- > Sales manager

### Did you know...

- > that cows are most productive and efficient at seven years of age?
- > that feed intake is dependent on many factors?
- > the E-dairy model provides practical parameters for optimisation of rumen fermentation and nutrients for the production of milk lactose, protein and fat?



THE TRAINERS

## Programme information

### Programme June 3 – 7, 2024

The programme is spread over a week. Click on the calendar to get additional information about the modules of your interest. General information can be found on our website: [Feeds & Nutrition 2024](#).

### Course Material & Presentations

Handouts will be provided in hardcopy and PDF format.

### Social Programme

Join our free complimentary dinners on Monday and Wednesday evening. The social programme is part of the experience and helps to digest the know-how obtained throughout the day. Grow your network and get inspired by your peers!

Tip! You can also registrate for a dinner, if your module starts the day after.

### Registration & Contact

To register for the modules click the button below.

If you have questions, please get in touch with our Educational Services team via: [training@schothorst.nl](mailto:training@schothorst.nl).

		Monday June 3	Tuesday June 4	Wednesday June 5	Thursday June 6	Friday June 7
#1	Feedstuffs					
#2	Feedstuffs					
#3	Nutrient Evaluation Monogastrics					
#4	Recent Developments in Animal Nutrition					
#5	Applied Swine Nutrition					
#6	Applied Swine Nutrition					
#7	Applied Swine Nutrition					
#8	Applied Poultry Nutrition					
#9	Applied Poultry Nutrition					
#10	Applied Poultry Nutrition					
#11	Advanced Dairy Nutrition					
#12	Applied Dairy Nutrition					
#13	Feeding Management & Ration Formulation					
	Dinner (included)					



## Practical information

### Location

The Feeds & Nutrition course will be organised in Intel Hotel Zaandam (The Netherlands).

### Course fee (all prices are excl. VAT, travel and accommodation expenses)

- > One-day module € 1.128,-
- > Two-day module € 2.134,-
- > **Discounts:** 5% when registering for two modules and 10% for three modules per person
- > **Early bird:** additional 5% discount when registering before April 1<sup>st</sup>, 2024
- > Dinner on Monday and Wednesday is included, which we highly recommend

### Public transport

Intel Hotel Zaandam is close to the Zaandam train station (3 minutes' walk).

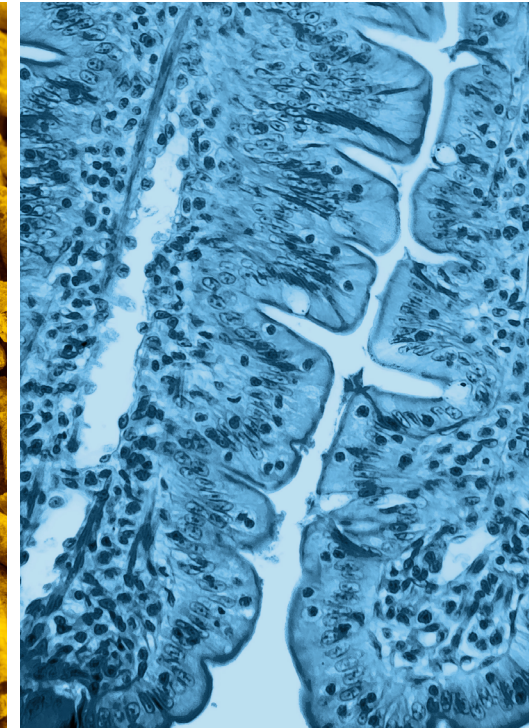
Every 10 minutes, a train departs from Amsterdam Central Station to Zaandam and takes 12 minutes. From Schiphol Airport to Zaandam takes 18 minutes by train.

### Registration & Contact

You can register for the modules [via this link](#).

If you have questions, please get in touch with our Educational Services team via [training@schothorst.nl](mailto:training@schothorst.nl).





## ➤ WE LOOK FORWARD TO WELCOMING YOU

Meerkoetenweg 26 • 8218 NA Lelystad  
P.O. Box 533 • 8200 AM Lelystad  
The Netherlands

[training@schothorst.nl](mailto:training@schothorst.nl)  
+31 (0)320-252294  
[www.schothorst.nl](http://www.schothorst.nl)